

Lysine-specific demethylase 4C

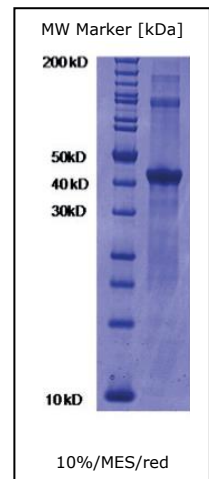
Variant: KDM4C (human) (1-361)
SwissProtID: Q9H3R0
Catalog No.: PR-0127

Product description:

Human KDM4C (synonym: JMJD2C) was expressed and purified from *E.coli*. The protein was expressed as a C-terminal HIS-fusion protein and purified by a two-step chromatographic procedure comprising affinity and size exclusion chromatography steps.

Storage buffer: 10 mM Hepes pH 7.5;
500 mM NaCl;
5% Glycerol;
0.5 mM TCEP

Purity: > 90%



Example Batch Information

Conc.: 15.9 mg/mL (Bradford)
Batch: 26/1
MW: 41.8 kDa

Stored at -80°C. Thaw rapidly and store on ice during use. Snap refreeze, for example in liquid nitrogen and dry ice/ethanol. Avoid repeated thawing and freezing.