

Lysine-specific demethylase 2A

Variant: KDM2A (human) (1-383)

SwissProtID: Q9Y2K7

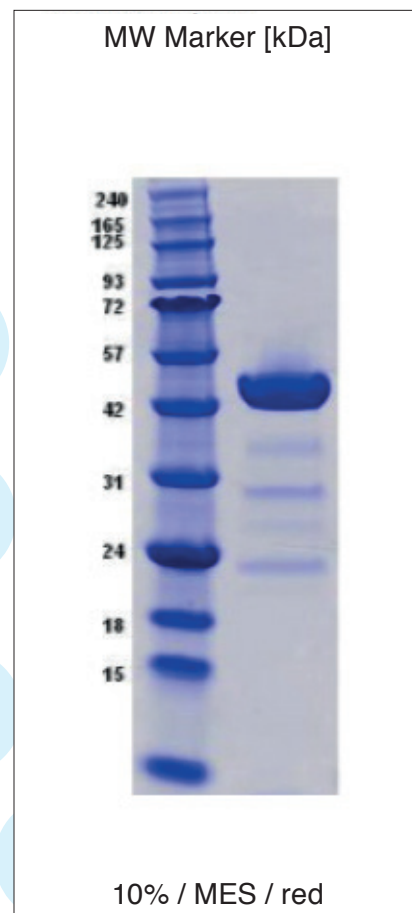
Catalog No.: PR-0130

Product description:

KDM2A (human) was expressed and purified from E. coli. The protein was expressed as a HIS-fusion protein and purified by a 2-step chromatographic procedure comprising affinity and size exclusion chromatography steps.

Storage buffer: 10 mM TRIS, pH8.0;
150 mM NaCl; 3 mM DTT

Purity: > 90%



Example Batch Information

Conc.: 16.3 mg/mL (Bradford)

Batch: 02/4

MW: kDa

Stored at -80°C. Thaw rapidly and store on ice during use. Snap refreeze, for example in liquid nitrogen and dry ice/ethanol. Avoid repeated thawing and freezing.